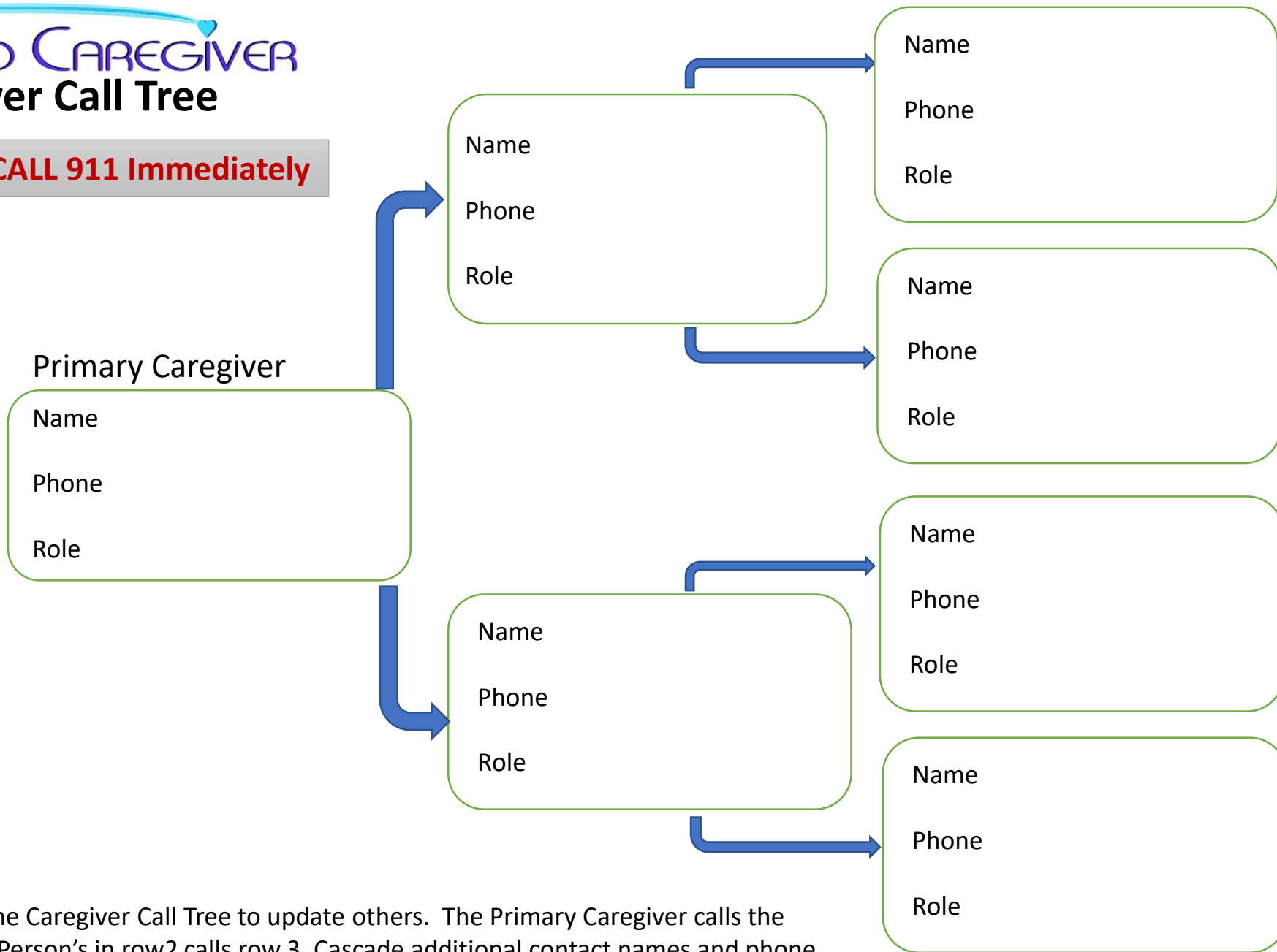


CARE TO CAREGIVER Caregiver Call Tree

Emergency CALL 911 Immediately



Instructions: Use the Caregiver Call Tree to update others. The Primary Caregiver calls the person's in row 2. Person's in row2 calls row 3. Cascade additional contact names and phone numbers until you have a complete Caregiver Phone Tree

Schedule for Helping Your Loved One and Each Other

| Who Will Do | Monday To Do's | Tuesday To Do's | Wednesday To Do's | Thursday To Do's | Friday To Do's | Saturday To Do's | Sunday To Do's |
|-------------|----------------|-----------------|-------------------|------------------|----------------|------------------|----------------|
| | | | | | | | |
| | | | | | | | |
| | | | | | | | |
| | | | | | | | |
| | | | | | | | |
| | | | | | | | |

Write-in the activities assigned to family and friends

Emergency CALL 911 Immediately